



*jordanfishwick*

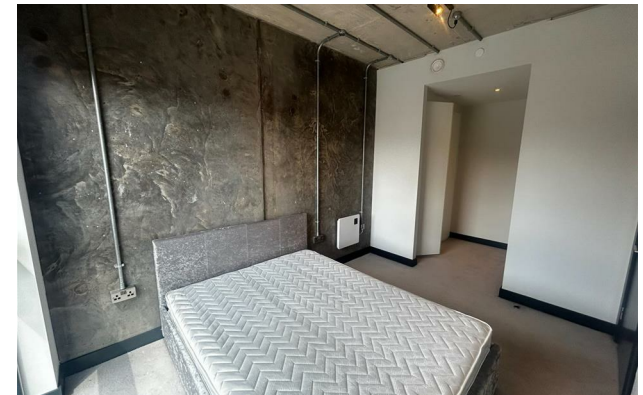
Flat 408, New Cross Central 18 Addington  
£1,300 Per Calendar Month





## 18 Addington Street Manchester M4 5GD

£1,300 Per Calendar Month



### The Property

Available End June. Fantastic 4th floor larger than average 1 bedroom apartment at New Cross Central. Situated just at the tip of the Northern Quarter and a stones throw from Swan Street/ Band On The Wall, the apartment has a great loft style feel with polished concrete walls, engineered wood flooring and high ceilings.

The property is furnished to a good condition and comprises of entrance into open plan living space with large kitchen, integrated appliances and high quality fittings, generous lounge area with large floor to ceiling windows. Well proportioned bedroom with fitted wardrobe/ dressing area. Bathroom with full bathroom suite including bath, brass high quality stylish fittings. Communally there is a residents' area to the ground floor and a private internal atrium garden. Council Tax Band B. EPC Rating B.

**\*VIDEO/ PHOTO OFFERS NOT ACCEPTED - PLEASE CALL TO BOOK A VIEWING\***



- Available End June
- 4th Floor, 1 Bedroom Apartment
- Northern Quarter/ Ancoats Location
- Fully Furnished
- Residents' Area and Communal Garden
- EPC B
- Council Tax B
- No Parking
- City Centre Location



Energy Efficiency Rating		
	Current	Potential
Very energy efficient - lower running costs		
(92 plus) A		
(81-91) B	86	86
(69-80) C		
(55-68) D		
(39-54) E		
(21-38) F		
(1-20) G		
Not energy efficient - higher running costs		
England & Wales	EU Directive 2002/91/EC	





These particulars are believed to be accurate but they are not guaranteed and do not form a contract. Neither Jordan Fishwick nor the vendor or lessor accept any responsibility in respect of these particulars, which are not intended to be statements or representations of fact and any intending purchaser or lessee must satisfy himself by inspection or otherwise as to the correctness of each of the statements contained in these particulars. Any floorplans on this brochure are for illustrative purposes only and are not necessarily to scale.

Offices at: Offices at Chorlton, Didsbury, Disley, Hale, Glossop, Macclesfield, Manchester Deansgate, Manchester Whitworth Street, New Mills, Sale, Wilmslow and Withington